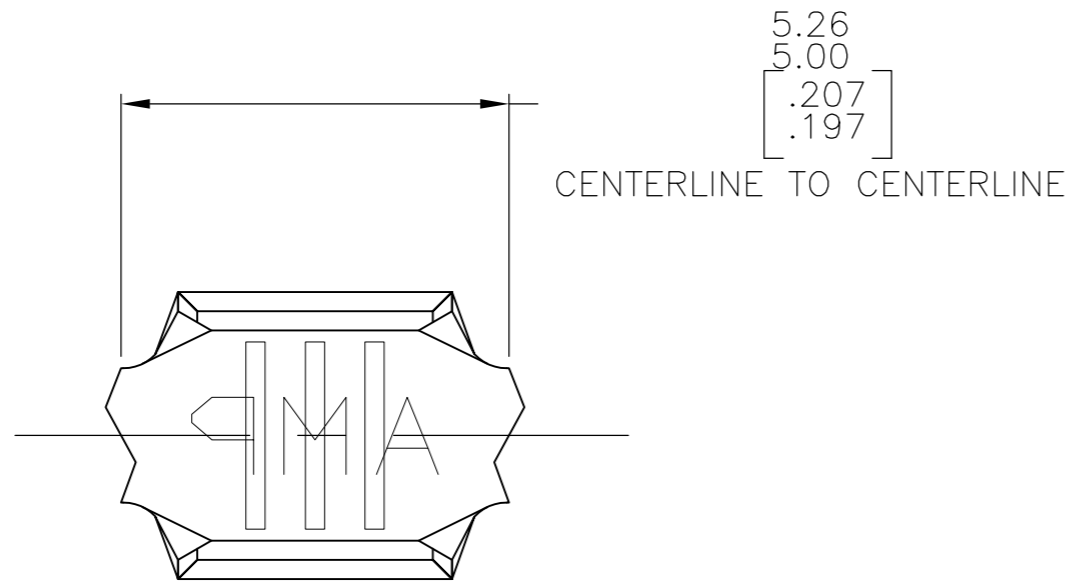
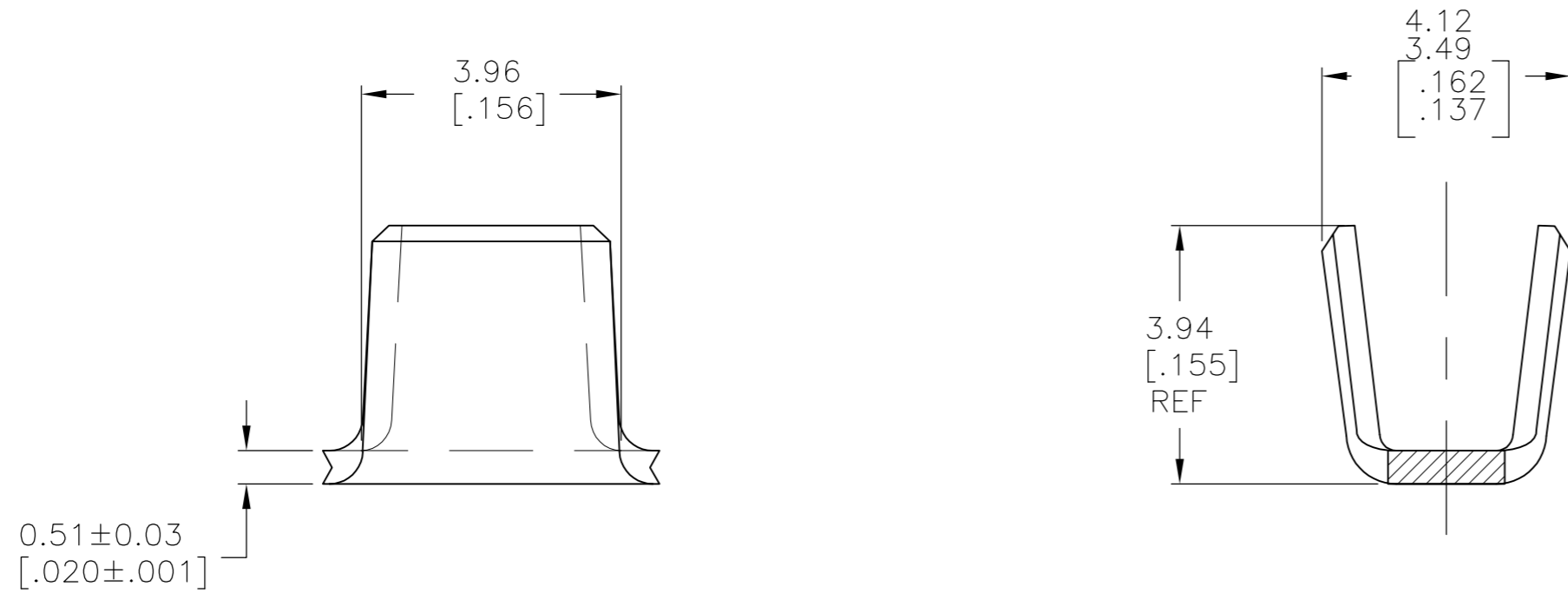


THIS DRAWING IS UNPUBLISHED. RELEASED FOR PUBLICATION  
 © COPYRIGHT - By - ALL RIGHTS RESERVED.

LOC	DIST	REVISIONS			
P	LTR	DESCRIPTION	DATE	DWN	APVD
AF	50	K3	REVISED PER ECR-11-006644	05APR11	HMR GJ



- 1 CONTINUOUS STRIP ON REELS.
- 2 TIN PLATE OVER COPPER UNDERPLATE.
- 3 WIRE RANGE FOR NEW APPLICATIONS: 1.27-2.38mm<sup>2</sup>[2500-4700 CMA]  
(WIRE RANGE APPROVED FOR APPLICATIONS IMPLEMENTED PRIOR TO 2005: 2000-5300 CMA).
- 4 OBSOLETE PARTS: OBSOLETE CIS STREAMLINING PER D.RENAUD/D.SINISI
- 5 CRIMP WIDTH: 3.05[.120] F TYPE. CRIMP HEIGHT IN INCHES (+/- .002) = (TOTAL CMA OF WIRES + 12240) / 220000.



4 OBSOLETE	-	H02 COPPER NICKEL	3	61492-3
	2	082 BRASS	3	61492-2
	-	082 BRASS	3	61492-1
FINISH	MATERIAL		WIRE RANGE	PART NUMBER
THIS DRAWING IS A CONTROLLED DOCUMENT.		DWN MICHAEL S. FEHER 06MAR2000	TE Connectivity	
DIMENSIONS: mm [INCHES]		CHK STEVE HEADER 06MAR2000	NAME STEVE HEADER	
TOLERANCES UNLESS OTHERWISE SPECIFIED:		APVD STEVE HEADER 06MAR2000	PRODUCT SPEC	
0 PLC ± - 1 PLC ± - 2 PLC ± 0.25[.010] 3 PLC ± - 4 PLC ± - ANGLES ± -		APPLICATION SPEC 114-2088	SPLICE	
MATERIAL SEE TABLE	FINISH SEE TABLE	WEIGHT -	SIZE A2	CAGE CODE 00779
CUSTOMER DRAWING		SCALE 10:1	DRAWING NO C-61492	RESTRICTED TO -
			SHEET 1 of 1	REV K3